

# Clark County Developmental Disabilities Program

---

## Families & Educators Training Series Welcome to Orientation

Angela Gomez – DD Program Coordinator  
October 2025



# County Role & Team

---

## Program Manager

Trish Buescher

## Program Coordinators

Angela Gomez

Kristin Wade

## Administrative/Office Support

Alex Koval

Cheri Osterman

Trudi Cumberbatch





*Inclusion  
Matters*

Developmental  
Disabilities  
Program



Grab Some Swag! Ask me questions!  
Share with friends!



## Developmental Disabilities Program

### *Mission*

Clark County will assist all people with developmental disabilities to have the opportunity to achieve full, active, integrated, and productive lives.

### *Values*

**ACCESS** People with disabilities and their families should have access to the supports needed to live, work and fully participate in local community life.

**CHOICE** Services and supports will be tailored and customer driven. Individuals and families will have the power, authority and ability to personalize and direct supports to achieve a life typical of all community members.

**INCLUSION** People with disabilities and their families should have opportunities for natural interactions and participation in all aspects of community life.

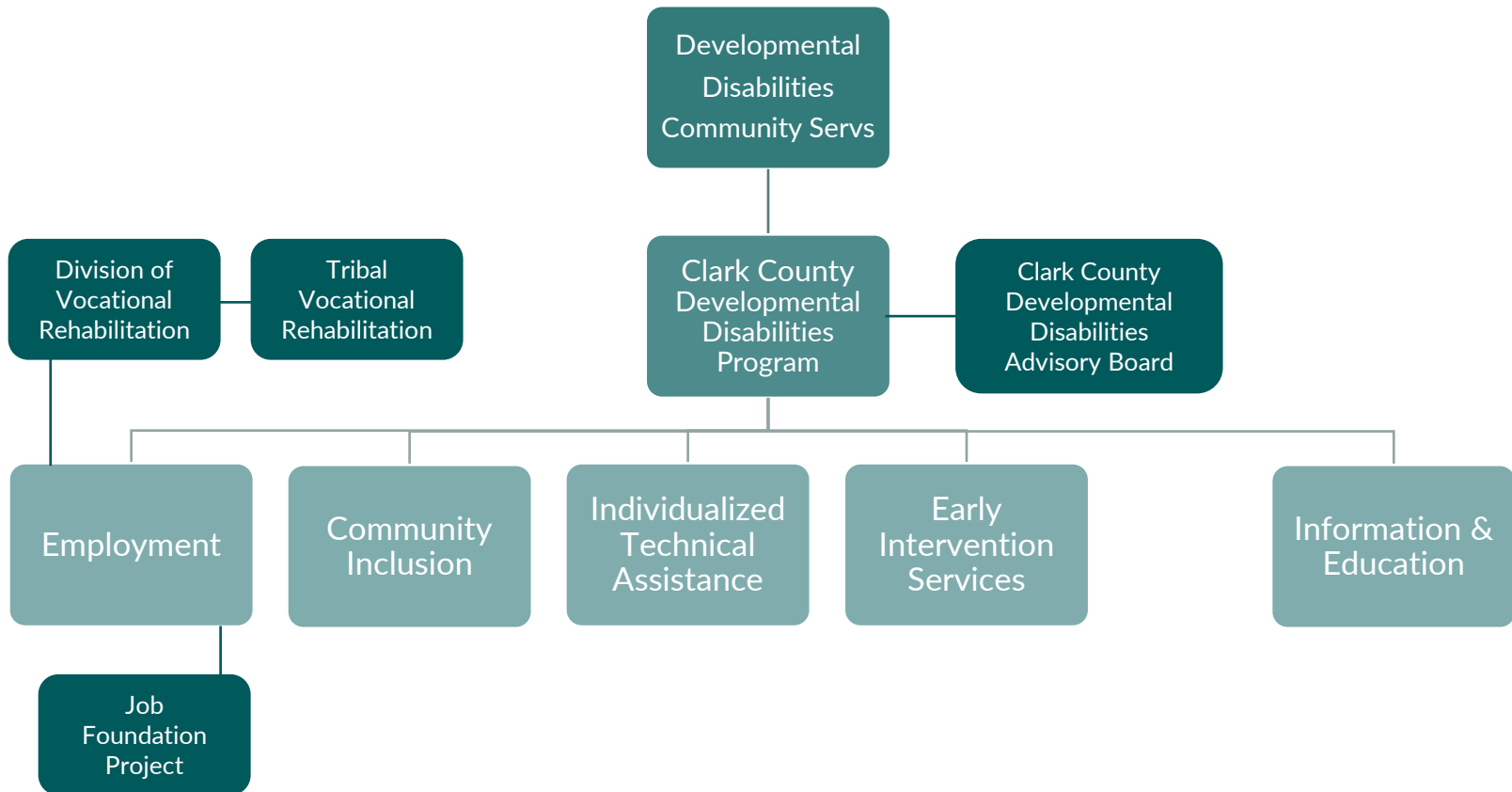
**PARTNERSHIPS** Clark County promotes partnerships including business, education, service providers and neighborhoods to ensure all individuals with developmental disabilities and their families have the opportunity for formal and informal supports. Formal supports and services should foster independence and personal growth, while informal supports should encourage friendships and community membership.

### *Vision*

People with Intellectual and Developmental Disabilities (IDD) are fully participating community members. This will occur in a community where each person is recognized for their gifts and contributions to that community without regard to their heritage, gender, orientation, age, disability, history, religion or nationality.

# Network of Services

---



# County Services Overview

---



# The Developmental Disabilities Advisory Board

## Join the Developmental Disabilities Advisory Board

ALONE, WE CAN DO SO LITTLE;  
TOGETHER, WE CAN DO SO MUCH  
-Helen Keller

Clark County's Developmental Disabilities Advisory Board is seeking volunteers to join the board

Volunteers will

- Learn about issues related to people with intellectual and developmental disabilities and their families
- Share concerns
- Listen to public comments


Additional Details

- Meetings on the first Wednesday of every other month starting in January and start at 5:15pm
- Meetings will be held in a hybrid format and are open to the public
  - In person-1300 Franklin Street | Vancouver, WA  
6<sup>th</sup> Floor of the Public Service Center
  - Virtually via video conference or phone call


### ABOUT THE BOARD

The Developmental Disabilities Advisory Board advises and makes recommendations to the Clark County Council relating to developmental disabilities issues and services. The board provides community leadership on improvement of efficiency and effectiveness of community development

For more information scan this QR CODE



OR Contact  
**Trish Buescher**  
564.397.7826  
patricia.buescher@clark.wa.gov



## Únase a la Developmental Disabilities Advisory Board

SOLOS PODEMOS HACER TAN POCO;  
JUNTOS PODEMOS HACER MUCHO MAS  
-Helen Keller

La Developmental Disabilities Advisory Board (Junta Asesora sobre Discapacidades del Desarrollo) del condado de Clark está en busca de voluntarios que deseen unirse.

Los voluntarios harán lo siguiente:

- Aprender sobre asuntos relacionados con las personas que tienen discapacidades intelectuales y del desarrollo y sus familias.
- Comunicar inquietudes.
- Escuchar comentarios públicos.


Información adicional:

- Las reuniones se llevarán a cabo a las 5:15 p. m. del primer miércoles del mes, cada dos meses.
- El formato de las reuniones será híbrido y estarán abiertas al público
  - Presencial: 1300 Franklin Street | Vancouver, WA  
6<sup>th</sup> Floor, Public Service Center
  - De forma virtual por videoconferencia o llamada telefónica


### INFORMACIÓN SOBRE LA JUNTA

La Developmental Disabilities Advisory Board asesora y hace recomendaciones al Consejo del condado de Clark sobre cuestiones y servicios relacionados con las discapacidades del desarrollo. La junta ofrece orientación a la comunidad para mejorar la eficiencia y eficacia de los programas comunitarios relacionados con discapacidades del desarrollo.

Para más información escanea este CÓDIGO QR



O póngase en contacto con  
**Trish Buescher**  
564.397.7826  
patricia.buescher@clark.wa.gov





# Individual Supported Employment Services

---

- Supported employment is support to individuals with I/DD to obtain and maintain jobs, for promotion/career development and is an opportunity for everyone in our community to add to workplace diversity
- Individualized and customized to participant strengths, abilities, interests, and informed choice
- Pay for participants is minimum wage and higher
- Support is not only to the employee, but also employers and coworkers
- Conducted in a variety of settings and worksites in which persons without I/DD are employed
- Clark County contracts with 7 agencies/companies for ISE services and oversees these contracts, including but not limited to payment for services, oversight/monitoring and general support.
  - ❖ ENSO
  - ❖ Employers Overload
  - ❖ Goldman & Associates
  - ❖ Strive NW (formerly Innovative Services NW)
  - ❖ Keys to Advancement
  - ❖ Tangible Systems
  - ❖ Trillium Employment Services
- Employment and Social Security benefits



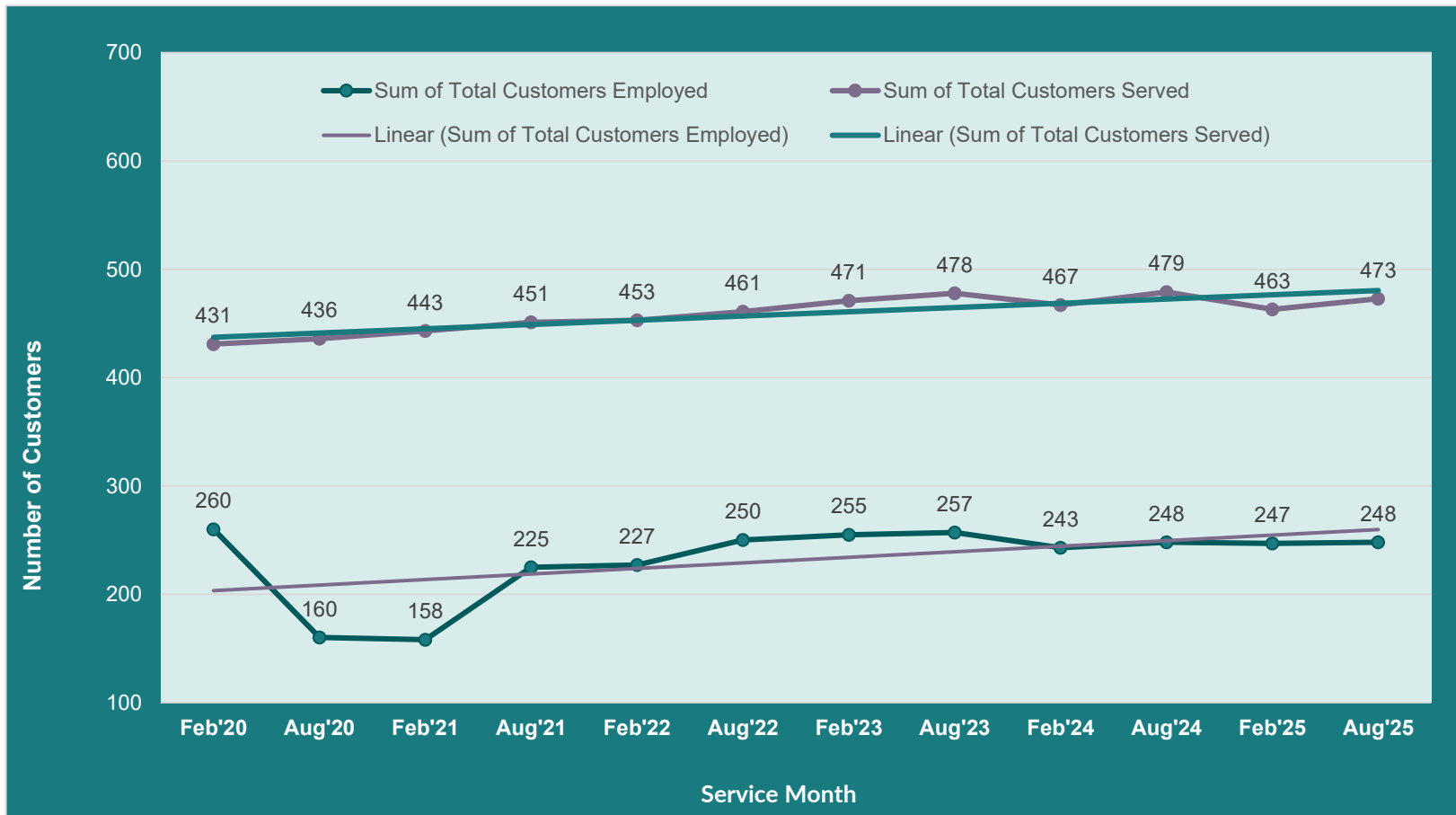
# Supported Employment in Clark County

---



# Supported Employment in Clark County

## Customers in Supported Employment Services 2020-2025



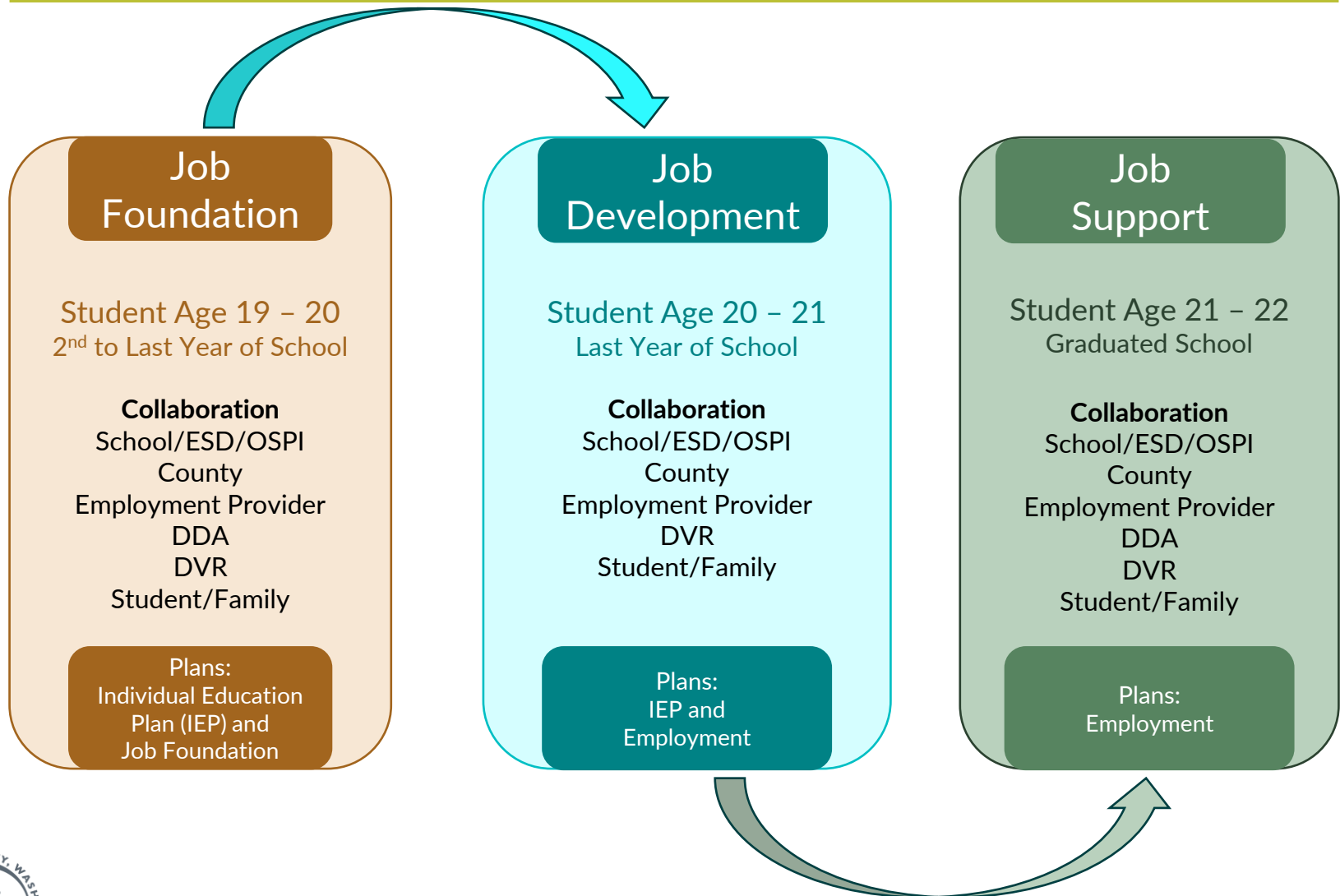
# Job Foundation Project

---

- Engage students earlier in planning for employment after graduation
- Connect students and families to community partners and resources
- Increase partnerships with and between schools, supported employment providers and other community partners to complete a detailed report that includes next steps for employment and future plans
- Increase the number of students completing transition programs with a job or a connection to education opportunities
- Eligibility requirements
  - Students ages 19-20 who are enrolled in and actively attending school (high school transition or life skills program)
  - Are an established client of DDA
  - Willing to work collaboratively with a team to help complete the Job Foundations Report
- Partners for this project
  - DDA
  - DSHS' Division of Vocational Rehabilitation (DVR)
  - Office of Superintendent of Public Instruction (OSPI)
  - Educational Service Districts (ESD)
  - Schools
  - Employment providers
  - Students & Families



# Job Foundation Process



# Job Foundation Report

---

- Communication
- Interactive Social Skills
- Self-Advocacy
- Task Management
- Work Interest Exploration
- Critical Documents
- Transportation



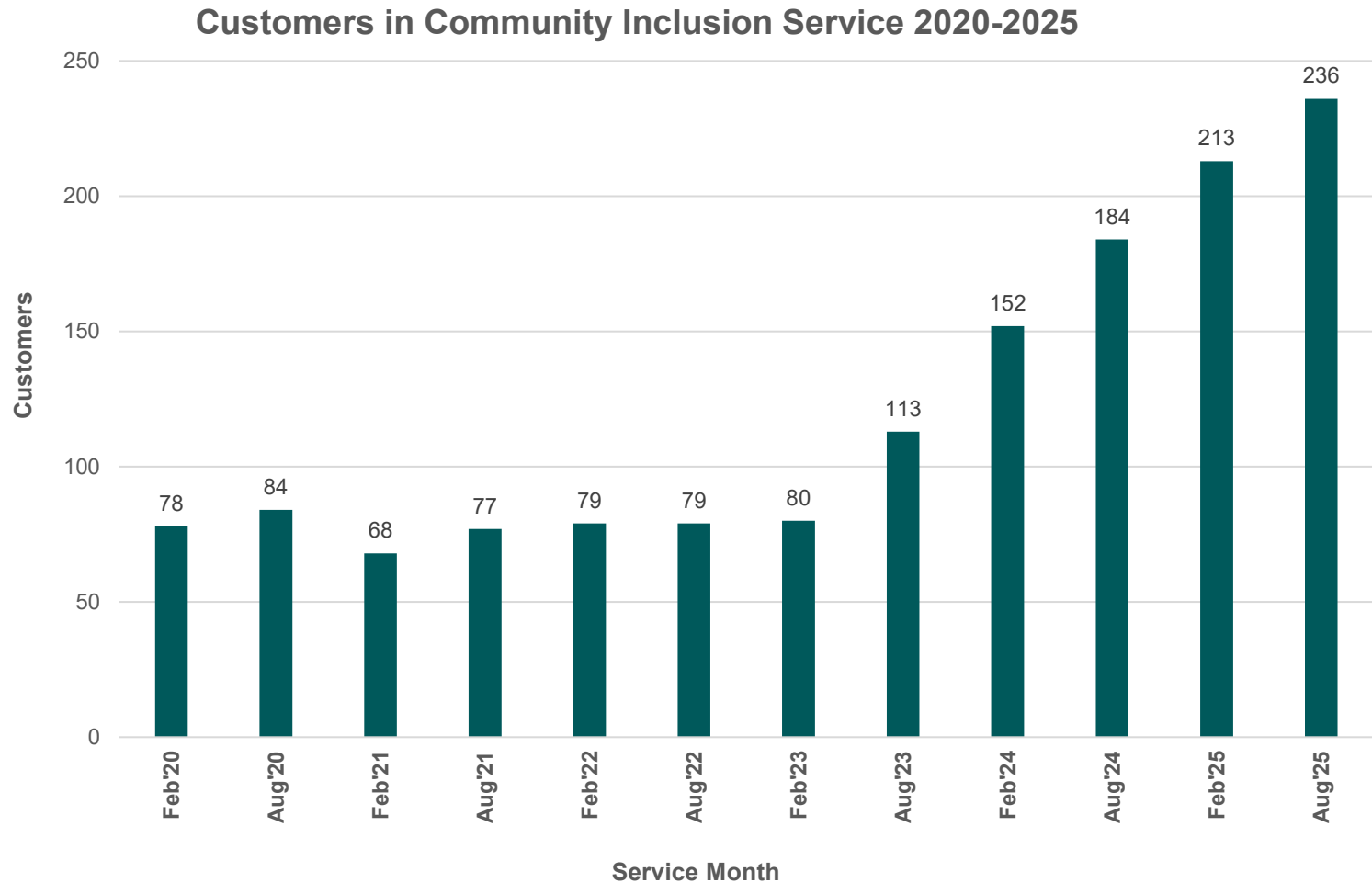
# Community Inclusion Services

---

- Community inclusion is support to individuals with I/DD to connect with community and develop relationships
- Present opportunities to contribute, participate and connect with others in their local communities based on individual interests, gifts and skills
- Receive support to help build relationships with people in the community who are not paid staff
- Build new skills while volunteering or connecting with integrated community classes or clubs
- Can receive both services after 9 months of engaging in employment or in retirement age
- Goal of the support is to engage individual in activity, then fade services to allow individual to continue the activity/relationships without support
- County contracts with 9 agencies/businesses that support individuals to engage with their community for this service
  - ❖ Ashby Family LEAD & Engagement Services
  - ❖ Employers Overload
  - ❖ iEmbrace
  - ❖ Goldman & Associates
  - ❖ Strive NW (formerly Innovative Services NW)
  - ❖ Keys to Advancement
  - ❖ Trillium Employment Services
  - ❖ Tangible Systems



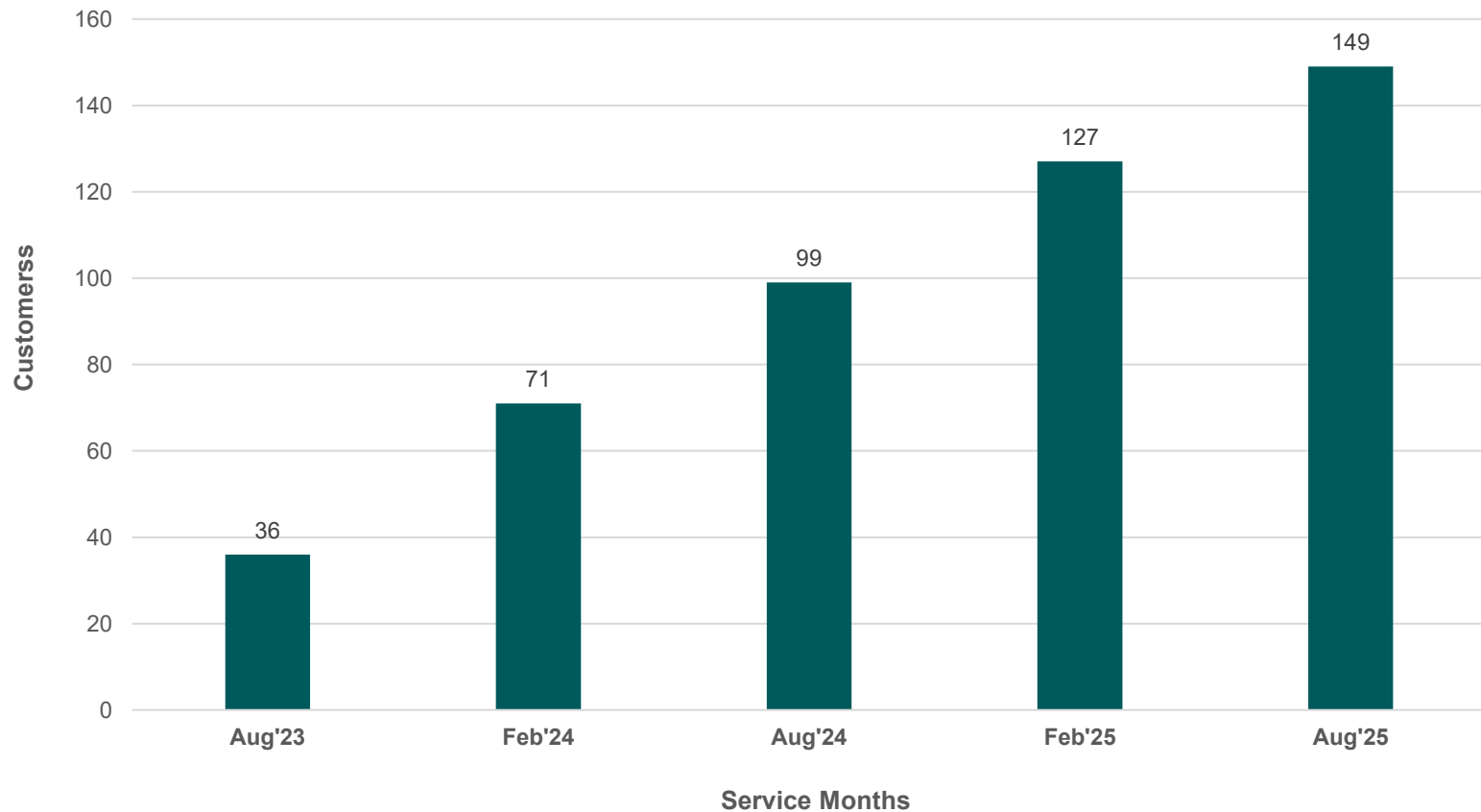
# Community Inclusion in Clark County



# Receiving both Employment & Community Inclusion

## Customers in Concurrent Services 2023-2025

Both Community Inclusion and Employment Service



# Community Information & Education

---

- Community presentations and offerings – including this training series annually
- Resource Fair at the end of this training series
- Collaboration with schools to support Person-Centered Planning and Transition services
- Funding of Subject Matter Experts/consultants to support individual needs, trainings and information to providers
- Support to the Parent Coalition
- PEACE NW – groups, classes, support and information
- Inquires from individuals/families, including referrals



# Early Intervention/Child Development Services

---

- The county is only one of the funders of Birth – 3 Early Intervention Services
- Early intervention services are developmental services, provided under public supervision, and in natural environments.
- They are designed to meet the developmental needs of eligible infants or toddlers and are designed to help parents help their child develop and learn.
- Early intervention (during the first years of a child's life) can make a big difference by helping you:
  - Find the services you need for your child
  - Understand your child's developmental growth
  - Support your child's learning and development and successful participation in home and community activities
- What is the purpose of early intervention?

The purpose of early intervention is to build upon family strengths by providing coordination, supports, resources, and services to enhance the development of children with developmental delays and disabilities through everyday learning opportunities

- Enable families to care for their child and participate in family and community activities



# Clark County Events

---

## October is National Disability Employment Awareness Month

The Developmental Disabilities Advisory Board (DDAB) plans an employment event every year. Awards are presented to employment participants, employer advocates and employment professionals –watch today on CVT - <https://www.cvtv.org/video/25th-annual-disability-employment-awareness-celebration-10-08-25-2025101031/>



# Upcoming Family & Educator Training Series Topics

---

NOVEMBER 18, 2025

5PM-7PM

**A Panel on Adult Life and Possibility**

JANUARY 20, 2026

5PM-7PM

**Your Guide to Adult Supports: DDA,  
DVR & Tribal DVR Explained**

FEBRUARY 17, 2026

5PM-7PM

**Social Security Basics: SSI, SSDI, and  
Beyond**

MARCH 17, 2025

5PM-7PM

**Guardianship and Beyond: Exploring  
Options and Alternatives**

**Access materials &  
more information at**

**[www.clarkfamilyresources.org](http://www.clarkfamilyresources.org)**

**Join us virtually or in-person**

**Register now at :**

**[www.gowise.org/fts](http://www.gowise.org/fts)  
or scan the QR code:**



# **RESOURCE FAIR**

APRIL/MAY 2026

RESOURCES, RAFFLE PRIZES, FOOD,  
INFORMATION SESSIONS & MORE

Is there a resource/support that you are interested in  
hearing/learning about?

**WE WOULD LOVE TO HEAR FROM YOU!**





Angela Gomez

Clark County DD Coordinator

[Angela.Gomez@clark.wa.gov](mailto:Angela.Gomez@clark.wa.gov)

(564) 397-7825 or call/text to (360) 448-8088

